

LW12™ IN WALL LAMP MODULE



USER MANUAL 3

GEBRAUCHSANLEITUNG 9

GUIDE UTILISATEUR 15

MODO DE EMPLEO 21

MANUALE D'ISTRUZIONI 27

GEBRUIKSAANWIJZING 34

INSTALLATION INSTRUCTIONS FOR MARMITEK X-10 IN-WALL DIMMER MODULE LW12™

SAFETY WARNINGS

- The wiring of your electrical installation is live (230 V) and extremely dangerous. Never connect the module when plugged into the mains. Always turn off the main switch before starting the installation.
- This product is for professional use and should be installed by a certified installer.
- To prevent short circuits, this product should only be used inside and only in dry spaces. Do not expose the components to rain or moisture. Do not use the product close to a bath, swimming pool etc.
- Do not expose the components of your systems to extremely high temperatures or bright light sources.
- Do not open the product: the device contains live parts. The product should only be repaired or serviced by a qualified repairman.
- In case of improper usage or if you have opened, altered and repaired the product yourself, all guarantees expire. Marmitek does not accept responsibility in the case of improper usage of the product or when the product is used for purposes other than specified. Marmitek does not accept responsibility for additional damage other than covered by the legal product responsibility.
- This product is not a toy. Keep out of reach of children.
- Adapters: Only connect the adapter to the mains after checking whether the mains voltage is the same as the values on the identification tags. Never connect an adapter or power cord when it is damaged. In that case, contact your supplier.
- Automatic switching devices provide comfort, but can also be dangerous. They can surprise people or can ignite clothing hanging over an electric heat source. Please be careful and take appropriate measures to avoid accidents.

How does Marmitek X-10 work?

Marmitek X-10 components use the existing mains wiring to communicate (using Marmitek X-10 signals). You can build a complete system using the three different kind of components of the Marmitek X-10 System:

- 1. Modules:** These components will receive Marmitek X-10 signals and will switch or dim the attached lamp or appliance.
- 2. Controllers:** These components will transmit Marmitek X-10 signals and thus will control the Modules.
- 3. Transmitters:** Wireless components like remotes. The signals of these components will be received by a controller with transceiver functionality (IRRF 7243, TM13 or console of a Marmitek Security System). The Transceiver will translate the signals into Marmitek X-10 signals on the power line.

Addresses

Up to a maximum of 256 different addresses can be preset. These are subdivided into a so-called HouseCode (A to P incl.) and a UnitCode (1 to 16 incl.). The HouseCode can also be set on the controllers, so that the controllers and modules become part of the same system. The address can be set either using code dials or by pressing buttons, depending on the type of module.

The Marmitek X-10 System uses standard commands, which control all units with the same HouseCode at the same time (e.g. all lights on, all off, etc.).

Signal Range

Range of Marmitek X-10 signals over the Power Line and how to increase the range.

The Marmitek X-10 System is based on power line communication. The range of the Marmitek X-10 signals very much depends on the local circumstances. On average the range is a cable length of 80 meters.

If you have difficulties with the range of your Marmitek X-10 signals, please pay attention to the following facts:

1. When more than one phase is used for your electrical system, it is necessary to couple these phases for the Marmitek X-10 signals. For coupling you can use FD10 Phase Couplers/Filters. You only need to install a Phase Coupler/Filter when your wall outlets and light switches are divided over more than one phase (more than one group is no problem). For bigger buildings or longer distances we advise you to use an active repeater instead of passive FD10's.

2. It is possible that Marmitek X-10 signals are attenuated by devices and lights which are connected to the power line. In a normal home situation this effect is negligible (the Marmitek X-10 system is using active gain control to eliminate the effects). However, it is possible that a particular device in your house is attenuating the signals so much that the range of Marmitek X-10 signals is decreased significantly. When you have range problems, it is wise to try to locate the device which is attenuating the signals simply by unplugging devices from the power line, and testing the differences in range for your Marmitek system. When e.g. your conclusion is that e.g. your computer monitor is attenuating the signal, you can use a FM10 Plug-in Filter between the power line and the monitor to eliminate the effects.

Known devices which can cause attenuation are:

PC Monitors
PCs with heavy internal power supplies
Old Televisions
Copiers
Fluorescent Lights
Gas Discharge Lamps (Energy Saving Lamps)

3. Some (old) devices are able to disturb the signal by transmitting noise on the power line. Because the Marmitek X-10 signals are transmitted on 120 kHz, only noise on or near this frequency will have influence on the range. When you use a FM10 Filter to connect this device to the power line, the noise will be filtered.

4. The Marmitek X-10 protocol has several mechanism to avoid modules to be switched on or off by other sources than your Marmitek X-10 Controllers. However, it is possible that the Marmitek X-10 signals are disturbed by e.g. baby phones which are in TALK mode

(continuous transmission). When these kind of signals are present on the power line it is possible that the Marmitek X-10 signals will not come through.

5. The mains do not stop at the front door of your home. Everything that is attached to mains nearby your home can have influence on Marmitek X-10 signals (e.g. heavy machinery). If you think that your system is influenced by devices out of your house, it is advisable to install FD10 Phase Coupler/Filter on each phase entering the house. These filters will block signals coming into or going out of your house, but will also match the impedance for the mains. The FD10's will not only filter but will also couple the phases (please see 1).

INTRODUCTION

Congratulations on your purchase of the LW12.

- The MicroModule can be installed behind conventional wall switches or into wall outlets because of the extreme small size of the MicroModule (Minimum built-in depth 40 mm, advised 50 mm). The MicroModule is also ideal for installation into light fixtures or for use in areas with limited space such as rooms with lowered ceilings.
- Universal compatibility: No limitation in choosing brand, colour or type of any wall switches and outlets. The LW12 can be used to switch and dim 230V light bulbs, 230V halogen lamps and low-voltage halogen lamps with transformers ranging from 60 to 250 watts/230 volts.

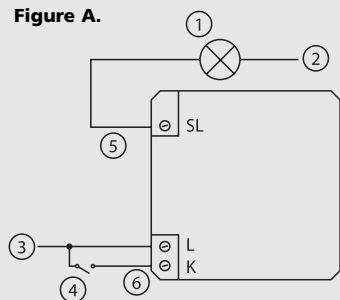
This module can be activated using a momentary switch connected to it or using Marmitek X-10 PLC signals. It can be operated using the following Marmitek X-10 signals: ON, Off, DIM, BRIGHT and the optional Marmitek X-10 commands All Lights On/All Lights Off/All Units Off if these are programmed. The unit will accept a momentary switch. The input for the switch is connected to the phase (brown wire, 230V), the output of the switch is connected to input "K" of the LW12 MicroModule. See figure A.

No Neutral (blue wire) has to be connected to the LW12 MicroModule, which means it can be easily used instead of a normal switch, without additional wiring. The module is equipped with softstart, softdim and a memory setting for the last dim level. When power has been interrupted, the module will be in the OFF position. The LW12 uses 1-way X-10 communication.

INSTALLATION

- Switch off appropriate mains fuse and master switch!
- Where present, take the wall switch out of the wall box.
- Disconnect all wires from the switch.
- Connect the live (brown) and load wire (black) to the terminals of the LW12 as described in figure A.
- Replace your normal make/break contact switch by a momentary switch.
- Connect a load wire (brown) to the momentary switch (CAUTION: In the interest of safety and to make the device work properly, this load wire

Figure A.



- 1. Lamp**
- 2. Neutral (blue)**
- 3. Live (brown)**
- 4. Momentary Switch**
- 5. Load (black)**
- 6. Switch input (black)**

HAS TO be from the same group).

- Connect a black wire to the output of the switch. Connect the other end of this black wire to the input K of the LW12 MicroModule. See figure A.
- Place the module against the back of the wall box and replace the switch inside the box.
- Switch on mains fuse and master switch.

Programming the address and the optional functions All Lights On/All Lights Off/All Units Off:

Unlike most Marmitek X-10 Modules the LW12 does not have code wheels.

When leaving the factory, the LW12 is set to the default address A1 en does not respond to the optional functions All Lights On/All Lights Off/All Units Off. To change the address and the settings for the All Lights On/All Lights Off/All Units Off functions, the module needs to be set to the program mode.

Activating the program mode can be done in 2 ways:

1. By transmitting On / Off commands of the set address in quick succession (e.g. if the address is B2: B2 ON, B2 OFF, B2 ON, etc.) After the LW12 has changed state 5 times, with no more than 1.5 seconds between changes, the LW12 will no longer respond, which means the module is set to the program mode.
2. By quickly pressing/switching the momentary switch connected to the module. After the LW12 has changed state 5 times, with no more than 1.5 seconds between changes, the LW12 will no longer respond, which means the module is set to the program mode. Once in Program Mode the new address can be set by sending an "Address" or "Address On" (e.g. B2 ON) or "Address Off" command for the new address code twice (using any Marmitek X-10 controller). If you want to change the code again, just send the new 'Address ON' or 'Address OFF' command twice. To set the unit to respond to "All Lights On" and/or "All Lights Off" and/or "All Units Off" just send these commands twice for the new address code (using any X-10 controller).

Please note: The "All Lights On/All Lights Off /All Units Off" options can be disabled by setting a new address or by returning to the Default Setting.

Resetting the LW12

When leaving the factory, the LW12 is set to the default address A1 en does not respond to the optional functions All Lights On/All Lights Off/All Units Off. If the address and settings for the options "All lights on/All lights off /All Units Off" aren't known, the default address of A1 can be set by applying power to the unit and sending the address P16 to the unit twice (using any X-10 controller - i.e.: TM13 + RF remote control).

This can either be just the address "P16" or "P16 On" or "P16 Off". The commands must be sent within 30 seconds of applying power to the unit. Setting the default address automatically cancels the options "All Lights On", "All Lights Off" or "All Units Off".

Exiting the programming mode

Automatic: Wait for 1 minute. The device will then automatically exit the program mode.

Manually: To return to Run Mode: either send "Address On", "Address Off" or press the key quickly (no more than 1.5 seconds between key presses). After 5 key presses or "On/Off" commands, the LW12 will start to respond, indicating that the unit is back in Run Mode.

Detailed information on the type of switch

If the connected momentary switch is used, the status of the LW12 will change if the button is pressed for less than 2 seconds. If the momentary switch is pressed for a longer duration, the LW12 will dim. The module first dims all the way down and then back up.

FREQUENTLY ASKED QUESTIONS

What is the reason for modules to switch on/off spontaneously?

It is possible that a Marmitek X-10 System is installed at one of your neighbours using the same House Code. To solve this problem try to change the House Code of your system, or have FD10 Phase Coupler/Filter installed at your incoming mains.

My modules will not respond to my controller.

Make sure that the House Code on all Modules and Controllers are set to the same House Code (A .. P).

My modules will not react to my remote / sensor.

When you use a remote or sensor, you should have at least one TM13 Transceiver or Marmitek Security Console installed in your house. These components will translate the radio signals to the Marmitek X-10 signal on the power line. Only one Transceiver should be installed for all remotes and sensors set to the same House Code.

Am I able to increase the range of my remotes by using more Transceivers?

Yes, you can use more than one TM13 Transceiver in your home when the range of your remotes is not sufficient. The TM13 is using so called collision detection to prevent signals to be disturbed when more than one TM13 is transmitting. TM13's will wait for a quite power line before transmitting their data. To prevent your Marmitek X-10 System to become slow or to prevent dimming from becoming less smooth, make sure that the TM13 units are placed as far away from each other as possible.

If your lamp doesn't work:

- Does the light work if you connect it directly to the mains?
- Is the module connected to a surge protector? A surge protector might block signals from your interface or controller.
- Is the HouseCode set correctly?

Do you still have questions? Please check out www.marmitek.com for more information.

TECHNICAL DATA

Supply voltage:	230V - 50 Hz
Supply current :	< 20 mA capacitive
Making capacity:	60W/230V to 250W/230V for incandescent lamps and halogen light
Signal sensitivity:	15 mVpp min 50 mVpp max at 120 kHz
Input impedance:	> 180 Ohm (L - N) at 120 kHz
X-10 Key codes:	All units Off, All Lights On, On, Off, Dim, Bright, All Lights Off, extended code 1 type 3
Connection:	Connecting clamps for phase, switched phase and switch (neutral not required)
Ambient temperature:	- 10° C to + 40° C (operation) - 20° C to + 70° C (storage)
Dimensions:	46x46x17mm



Environmental Information for Customers in the European Union

European Directive 2002/96/EC requires that the equipment bearing this symbol on the product and/or its packaging must not be disposed of with unsorted municipal waste. The symbol indicates that this product should be disposed of separately from regular household waste streams. It is your responsibility to dispose of this and other electric and electronic equipment via designated collection facilities appointed by the government or local authorities. Correct disposal and recycling will help prevent potential negative consequences to the environment and human health. For more detailed information about the disposal of your old equipment, please contact your local authorities, waste disposal service, or the shop where you purchased the product.